



Iowa Safe and Supportive Schools

Engagement | Safety | Environment

Last spring, Thomas Jefferson High School was invited to participate in the Iowa Safe and Supportive Schools grant and students, parents and teachers took the first-ever Iowa Safe and Supportive Schools survey to measure conditions for learning, which includes everything from school safety to student relationships with peers and adults.

Data from the student surveys and other school incident data have been used to create a Safe and Supportive Schools Index that reflects the health of a school's optimal conditions for learning in the areas of safety, engagement and environment. A school could earn 9 points in the area of Safety, 18 points in the area of Engagement and 9 points in the area of Environment for a total possible score of 36 points. The Iowa Safe and Supportive Schools Index therefore has a range from 0 – 36.

Thomas Jefferson High School INDEX = 19

The following table shows the Index Range and what level of support is needed to improve conditions for learning at Thomas Jefferson High School.

Index Range	Description
30-36	Schools with an IS ³ Index in this range are creating healthy school climates with optimal conditions for learning in the areas of safety, engagement, and environment. There still may be room for improvement.
23-29	Schools with an IS ³ Index in this range need some targeted support to improve the health of the school climate and to create favorable conditions for learning in the areas of safety, engagement and environment.
17-22	Schools with an IS ³ Index in this range need intensive to targeted support to improve the health of the school climate and to create favorable conditions for learning in the areas of safety, engagement and environment.
0-16	Schools with an IS ³ Index in this range need intensive support to improve the health of the school climate and to create favorable conditions for learning in the areas of safety, engagement and environment.

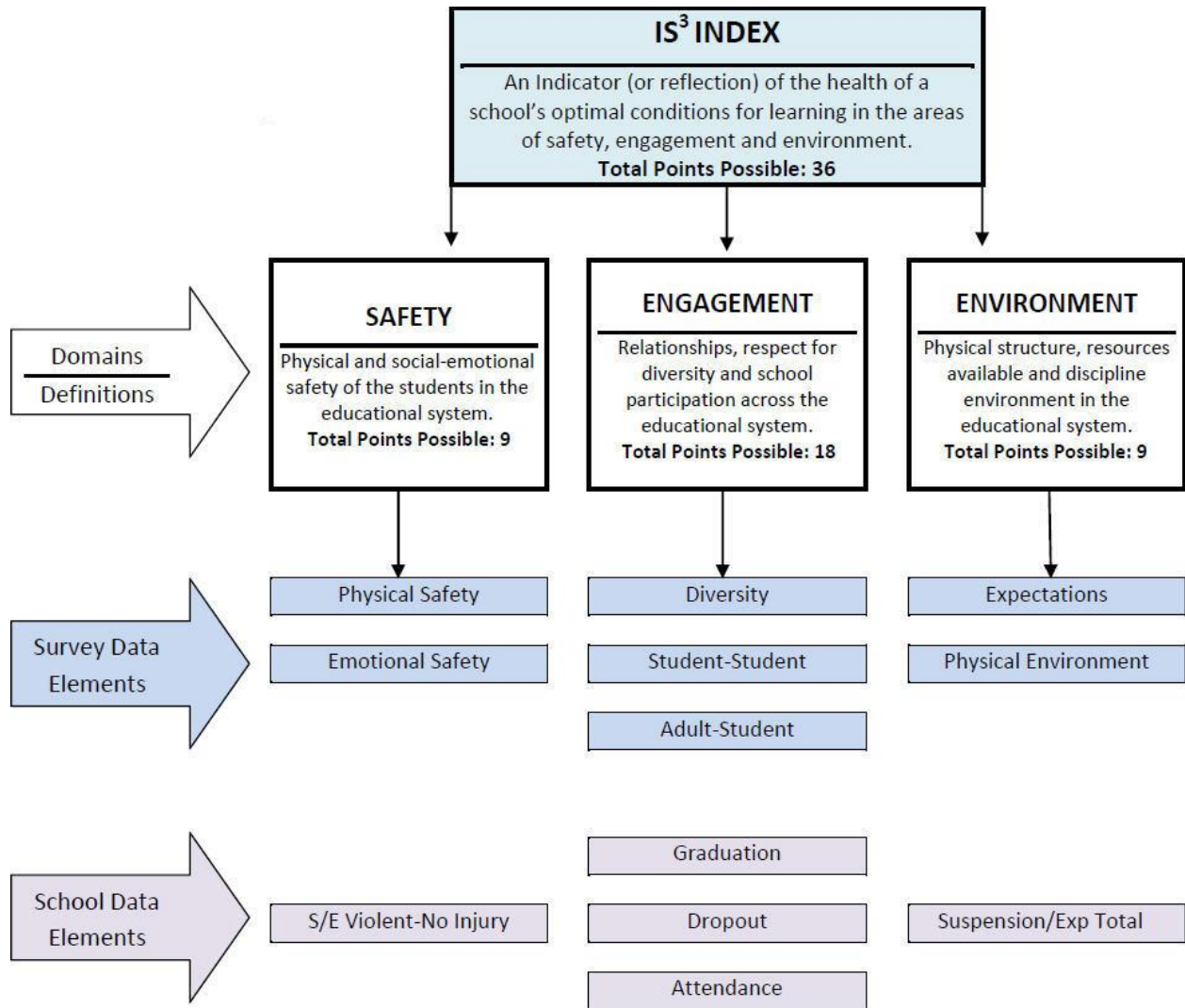
Schools that scored below 22 showed the greatest opportunity for improvement and received funding to strengthen conditions for learning. All schools that participated in the survey will receive additional support from the Department of Education and The Green Hills AEA.



Iowa Safe and Supportive Schools

Engagement | Safety | Environment

The chart below provides information about each of the data elements that make up the index.



Thomas Jefferson High School now begins the process of working together with the Green Hills AEA and the Iowa Department of Education to strengthen overall conditions for learning in our schools and we are confident in four years Thomas Jefferson High School will be a model for schools across the state and nation.



Iowa Safe and Supportive Schools
Engagement | Safety | Environment

With the eyes of local, state and national leaders upon us, we are up to the challenge of embracing change and finding new and creative ways to support our students and ensure they are given the opportunity to succeed.”

For more information about the Thomas Jefferson index score, contact Principal Lisa Dale at ldale@cbcsd.org.

For more information about the Iowa Safe and Supportive Schools grant go to: www.safesupportiveschools.ed.gov

You can also visit www.safesupportiowa.com